

# Student Affairs Stories of Sustainability: Resources to Engage Students and Remove Silos

SPONSORED BY:

HIGHER EDUCATION ASSOCIATIONS SUSTAINABILITY CONSORTIUM (HEASC)

---

HOSTED BY:

ASSOCIATION FOR THE ADVANCEMENT OF SUSTAINABILITY IN HIGHER EDUCATION (AASHE)





A network of higher education associations with a commitment to advancing sustainability both within their constituencies and the system of higher education. Member organizations include:

- ❖ ACPA-College Student Educators International
- ❖ American Association of Community Colleges (AACCC)
- ❖ American Association of State Colleges & Universities (AASCU)
- ❖ Association for the Advancement of Sustainability in Higher Education (AASHE)
- ❖ Association of College and University Housing Officers – International (ACUHO-I)
- ❖ Association of Higher Education Facilities Officers (APPA)
- ❖ Campus Safety, Health, and Environmental Management Association (CSHEMA)
- ❖ Council for Christian Colleges & Universities (CCCU)
- ❖ National Association of College & University Business Officers (NACUBO)
- ❖ National Association of Educational Procurement (NAEP)
- ❖ National Association of Independent Colleges & Universities (NAICU)
- ❖ NIRSA: Leaders in Collegiate Recreation



---

**Helping to create a brighter future of  
opportunity for all by advancing  
sustainability in higher education.**

By creating a diverse community engaged in sharing ideas and promising practices, AASHE provides administrators, faculty, staff, students, and the business that serve them with:

- ❖ Thought leadership and essential knowledge resources
- ❖ Outstanding opportunities for professional development
- ❖ Framework for demonstrating value and competitive edge created by sustainability initiatives

## Webinar Facilitators



### **Debra Rowe, PhD**

HEASC Consultant /Advisor

President, U.S. Partnership for Education for Sustainable Development

Founder, Disciplinary Associations Network for Sustainability

Senior Fellow, Campaign for Environmental Literacy



### **Kaye Holman, PhD**

HEASC Sustainability Fellow

Global Leadership Sustainability Fellow, Colorado State University

Member Education Team Leader, ACPA Sustainability Advisory Committee

## Webinar Guest Speakers



**Tim Broderick**

Sustainability Coordinator, Housing & Dining, Colorado State University  
Chair, NASPA Sustainability Knowledge Community



**Janice DeMonsi**

Director of Recreation, Santa Clara University  
NIRSA Sustainability Committee

## Webinar Guest Speakers



**Maureen McGonagle, MBA**

Director of Campus Recreation, DePaul University  
Former President, NIRSA

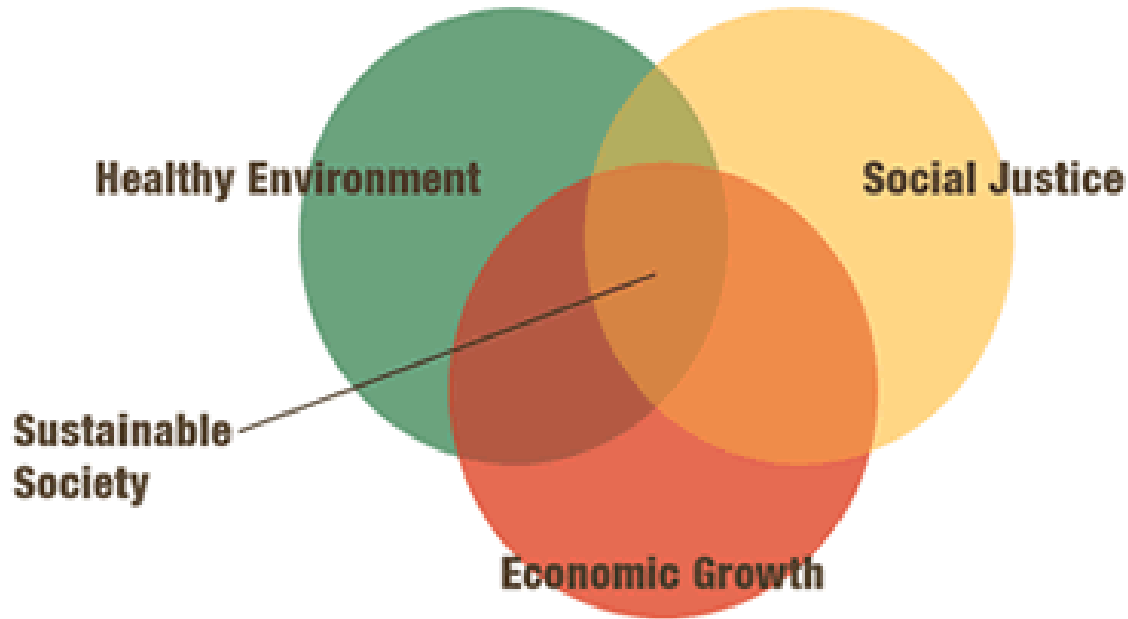


**James Tweedy, PhD**

Senior Associate Director, Residence Life & Housing, University of Delaware  
Chair, ACPA Sustainability Advisory Committee

# Defining Sustainability

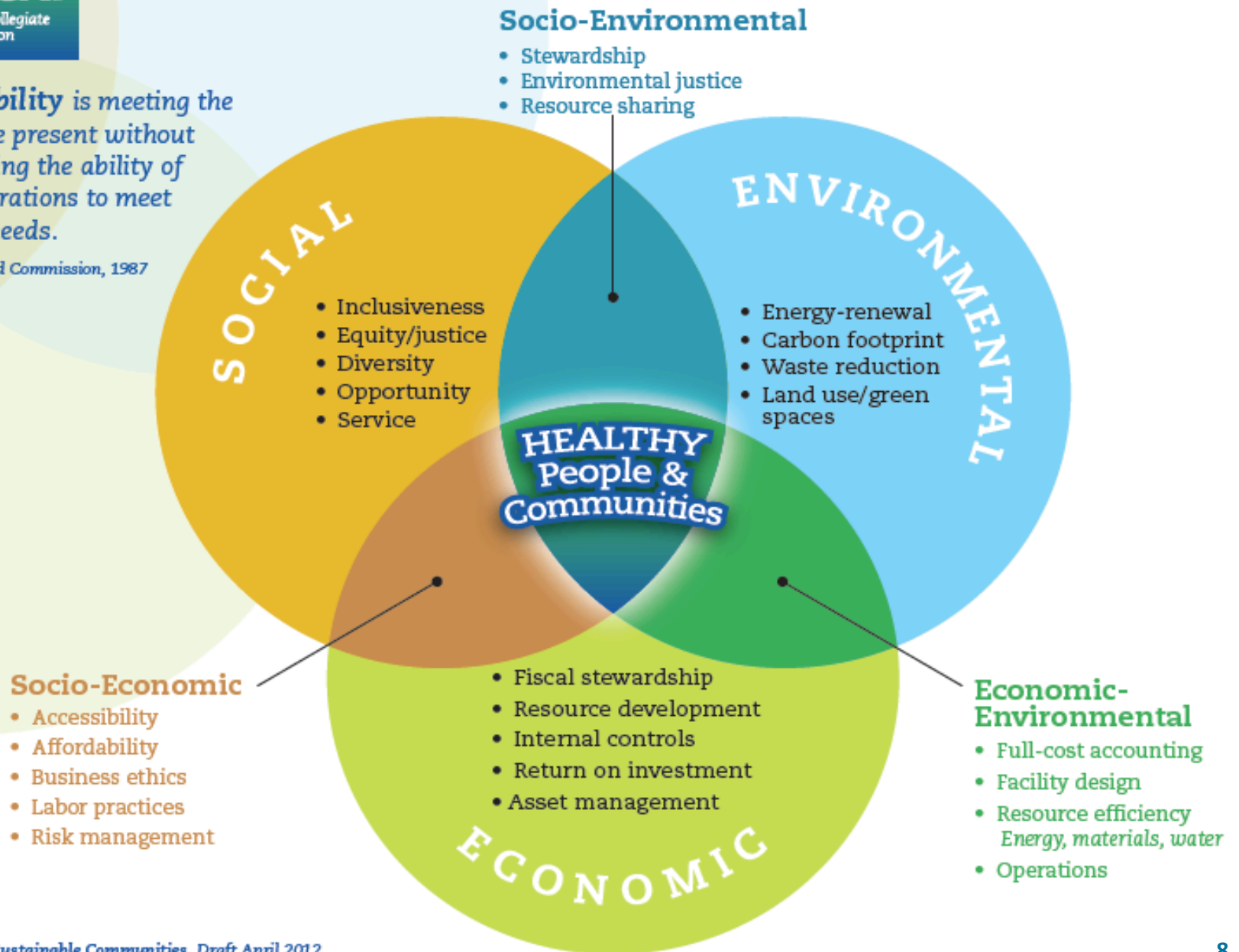
---



Source: ACPA College Student Educators International  
<http://www.acpa.nche.edu/sustaincomm>

**Sustainability** is meeting the needs of the present without compromising the ability of future generations to meet their own needs.

— The Brundtland Commission, 1987





## Learning Outcomes

- 1) Identify benefits of sustainability efforts on campus
- 2) Categorize silos hindering sustainability on campus
- 3) Provide stories of sustainability initiatives on campus
- 4) Share in peer-to-peer interaction in an open Q&A session
- 5) Connect to association resources for sustainability efforts

# **Benefits of Sustainability Efforts**

---

**Student Engagement**

**Organizing for a Better Future**

# **Silos Hindering Sustainability**

---

**Within Student Affairs**

**Between Student Affairs and Other Divisions on Campus**

# Stories of Sustainability Initiatives

---

# Living Learning Laboratory

---

Colorado State University



Colorado  
State  
University



# Living Learning Laboratory

---

The Living Learning Laboratory concept encompasses a range of practical on-campus applications of research and experiments that provide students hands-on experience, benefit operations, and enhance sustainability.



# Living Learning Laboratory: Composting & Anaerobic Digestion



## Partners

- ❖ Housing & Dining Services
- ❖ Agricultural Soil Science Department
- ❖ Facilities
- ❖ City of Fort Collins

## Statistics

- ❖ 312,327lbs of food waste diverted
- ❖ Employed 7 compost interns who gained industrial level composting experience



# Aspen Hall Graywater Reuse System for Toilet Flushing

A 250-gallon storage tank collects water from showers and sinks through a separate plumbing line. Large solids settle at the bottom of the tank.



Graywater from the storage tank flows through a filter removing large particles before chemical treatment.



Chlorine is injected to the graywater as a disinfectant. Chlorine kills pathogens and aesthetically improves water through odor reduction.



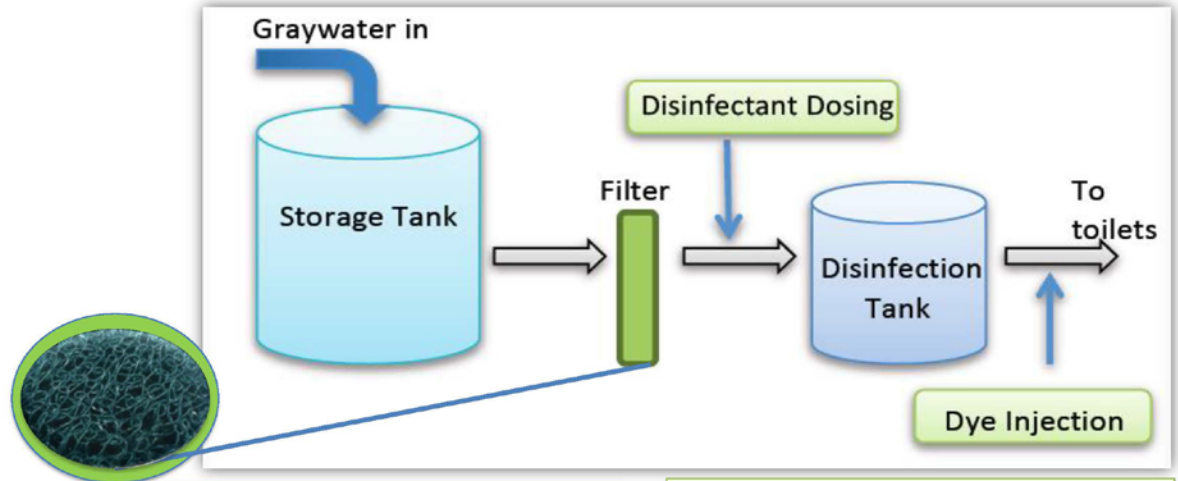
A minimum chlorine residual of 1.5 mg/L is maintained in the system to prevent pathogenic regrowth in the pipes and toilets.



The graywater is dyed blue to indicate that it is not drinking water.



Treated graywater is distributed to the residence hall toilets which are labeled to indicate flushing with non-drinkable water.



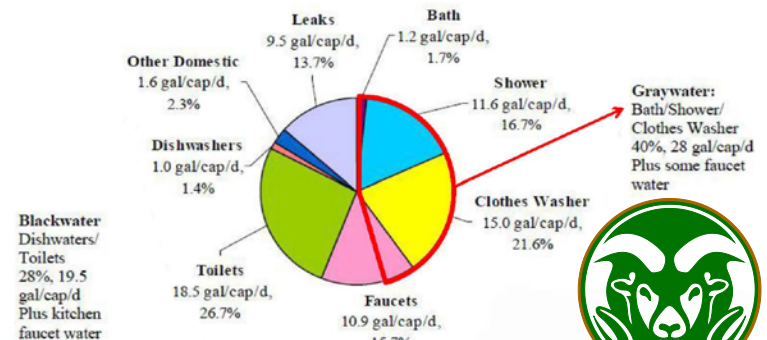
## Quick Facts

- Graywater in Aspen Hall does not include toilet waste or kitchen waste.
- Aspen Hall has a dual-plumbing system on the first floor, meaning the graywater plumbing can never come in contact with the drinking water supply line.
- Aspen Hall's system processes 295 gallons of graywater per day, on average.



## Water Savings

- The average person uses 18 gallons of water per day to flush toilets. By meeting toilet demand with graywater, there can be up to **35%** savings in indoor water consumption.





# Living Learning Laboratory: Grey Water



## Partners

- ❖ Housing & Dining Services
- ❖ College of Engineering
- ❖ Facilities

## Statistics

- ❖ System processes 295 gallons of grey water per day
- ❖ Intern is funded through the City of Fort Collins





# Student Involvement

---

**Housing and Dining Services**

**Student Engagement and Organizations**

**Co-Curricular Programs**



# Housing and Dining Services

## Eco Leaders Program

<http://housing.colostate.edu/sustainability>

Eco Leaders are students in the residence halls who help raise awareness about sustainability issues and encourage environmentally-responsible behaviors for an academic year.

## Live Green Teams

Sponsored by Housing & Dining Services, Live Green Teams are student and staff volunteers making a difference by taking environmental action.

- ❖ Cardboard Corrals
- ❖ Leave It Behind
- ❖ Recycle Mania



# Student Engagement and Organizations



EMPOWERING STUDENTS  
TO ADVANCE **SUSTAINABILITY**  
PRINCIPLES AND PRACTICES AT  
COLORADO STATE UNIVERSITY  
AND **BEYOND**

<http://sustainability.colostate.edu/ssc>



<http://www.green.colostate.edu/greenwarrior/>

RideShare



<http://wsnet.colostate.edu/cwis466/rideshare/>



<http://sustainability.colostate.edu/SLF>



# Co-Curricular Programs

---

## Green Initiatives – CSU

<http://www.green.colostate.edu/>

## School of Global Environmental Sustainability

<http://sustainability.colostate.edu/>

## Natural Resources & Sustainability Residential Learning Community

<http://livegreen.lc.colostate.edu>

## Earth Week

<http://www.green.colostate.edu/earth-week.aspx>



# HOOFPRIINT CHALLENGE



**Broncos Going Climate Neutral**



# 263 Tons of Carbon Emissions



- ❖ Club Sports Competitive Game travel (not practice) 2012 - 2013
- ❖ 4 surveys where the campus community can pledge to take an action for the quarter that changes a behavior/s to be sustainable
- ❖ Each action is given a small, medium or large impact weight in pounds
- ❖ Every two weeks results are calculated & a raffle winner is announced
- ❖ Raffle prizes are all products sold online at [www.reuseit.com](http://www.reuseit.com)



# Learn Change Agent Skills



## Campus Recreation

- ❖ Created the challenge
- ❖ Calculated the emissions
- ❖ Created the surveys
- ❖ Advertised the challenge, purchased the prizes

## Center for Sustainability

- ❖ Assisted with surveying
- ❖ Helped determine pledge pounds/survey item
- ❖ Promoted the marketing challenge

## Campus Ministry

- ❖ Part of Mission Sustainable month
- ❖ Promoted carbon footprint calculator

## Residence Life

- ❖ Provide Energy Challenge incentives
- ❖ Recognized participants by Resident Life Community



# Marketing the Challenge



- ❖ Mural in Campus Recreation
- ❖ Campus Recreation Newsletter
- ❖ Campus Recreation Website  
<http://www.scu.edu/recreation/department/sustainability/hooprint.cfm>
- ❖ Facebook: [hooprintchallenge](#) and [sustainabilityatscu](#)
- ❖ Instagram campaign: [#hooprintchallenge](#)

# Surveys Cover These Areas

---



## Conserving Water

- ❖ Take five minute shower
- ❖ Report or fix leaks as soon as you notice them
- ❖ Wash only full loads of laundry or dishes

## Saving Energy

- ❖ Combine errands to reduce car trips
- ❖ Change thermostat two degrees - down in the winter and up in the summer



# Surveys Cover These Areas



## Waste Reduction

- ❖ Buy items in bulk with minimal packaging
- ❖ Provide and encourage recycling at events (e.g., meetings, meals or parties)

## Miscellaneous Actions

- ❖ Volunteer for an hour at the Forge (campus garden)
- ❖ Eat vegetarian (twice a week), reducing consumption of meat/seafood



# Results as of March 2014



	9/23/2013	10/15/2013	10/30/2013	11/15/2013	12/6/2013	12/31/2013	2/11/2014	3/6/2014
Participant: Fac/Staff	0	68	77	128	138	138	191	199
Participant: Student	0	114	123	205	220	221	363	367
Participant: Other	0	0	0	1	1	1	1	1
Water Conservation	0	9925	10950	17125	18625	18625	30425	31325
Energy Saving	0	36275	39475	58575	62200	62500	99225	101450
Waste Reduction	0	26775	29275	42475	45075	45075	72775	74300
Miscellaneous Actions	0	18425	21000	32575	34675	34675	51350	52350
Total Pounds	0	91400	100700	150750	160575	160875	253775	259425
Total Tons	0	45.7	50.35	75.375	80.2875	80.4375	126.8875	129.7125
Balance to date(tons)	263	217.3	212.65	187.625	182.7125	182.5625	136.1125	133.2875

**Total Faculty/Staff: 199**

**Total Pounds of Behavior Change: 259,425**

**Total Students: 367**

**Total Tons: 129.7125**

**Total Others: 1**

**Balance to Deplete: 133.2875**

# Feedback as We Go



- ❖ Participants who have given names for the raffle are monthly e-mailed the process and a thank you for participating
- ❖ Updated image of emissions/smog with blue sky and target thermometer of progress toward depleting 263 tons
- ❖ Quarterly campus newsletter sent by Campus Recreation with updates for community on the current numbers and project targets



<http://www.scu.edu/sustainability/>

<http://www.scu.edu/recreation/department/sustainability2.cfm>



# D-Men Challenge

---



# D-Men Challenge

---



Focuses on the social and socio-economic aspects of **sustainability**:

- ❖ Inclusiveness
- ❖ Equity
- ❖ Diversity
- ❖ Justice
- ❖ Opportunity
- ❖ Service
- ❖ Accessibility



# Unique Partnership

---



## DePaul University

- ❖ Center for Access and Attainment - Enrollment Management and Marketing
- ❖ Office of Multi-Cultural Student Success - Student Affairs
- ❖ Campus Recreation Team Challenge - Facility Operations

## Chicago Public Schools

- ❖ Male Initiative Project





# D-Men Itinerary

---



9:30 am	Team Challenge
11:00 am	DePaul Overview & Campus Tour
Noon	Lunch
1:00 pm	Courageous Conversations
2:00 pm	Departure



# Purpose #1

- ❖ Build and reinforce teamwork, camaraderie and collective responsibility among the participants by engaging them in mentally and physically challenging activities that encourage creativity, critical thinking and reflection.
  
- ❖ Campus Recreation's Team Challenge facilitators



# Purpose #2

---



- ❖ Learn about the university and what it takes to enroll and succeed in a selective institution such as DePaul
- ❖ Center for Access and Attainment's Student Tour Guides





# Purpose #3

---

- ❖ Engage in frank conversations around the intersections of race, gender, masculinity and violence experienced in participants' daily lives.
- ❖ Office of Multi-Cultural Student Success Peer Mentors



# D-Men Challenge Snapshot

---



## Participants

- ❖ 225 CPS Students
- ❖ 12 Schools
- ❖ 2 Schools / Event

## With VEF-Grant Support

- ❖ Vincentian Endowment Fund (VEF) Grant, covering transportation, lunch, and t-shirts for participants
- ❖ DePaul Partner Departments, donations of student wages and facilities

## Post VEF-Grant Support

- ❖ Program continues but has been scaled back



# D-Men Challenge Outcomes

---

## **Participants Self-Reported Learning:**

- ❖ New leadership ideas
- ❖ Improved ability to communicate effectively on difficult topics
- ❖ Improved ability to work with a group to find solutions
- ❖ New conflict resolution skills

## **Participants Additionally Reported:**

- ❖ Feeling more confident about applying to college

# GLAD: Girls Learning at DePaul

---



- ❖ **Vincentian Endowment Fund** - obtained in 2012
- ❖ **Program structured similarly to D-Men Challenge**
- ❖ **Self-Reported Outcomes**
  - New ideas about leadership
  - New ways to solve problems
- ❖ **Will be continued after grant expires**

# Sustainability Website

---

DEPAUL  
UNIVERSITY



<https://mission.depaul.edu/Programs/Sustainability/Pages/default.aspx>





# Decentralized or “Sustainability for All”

---

University of Delaware



# Brief History

---



- July 2006 UD Sustainability Task Force Created
- April 2008 Dr. Harker signs the American College and University Presidents Climate Commitment / Talloires Declaration by the Association of University Leaders for a Sustainable Future
- April 2008 UD holds it's first Earth Week
- May 2008 Dr. Harker unveils his "Path to Prominence" strategic plan which includes "The Initiative for the Planet"
- June 2008 Senior Class gift funds the Carbon Footprint Initiative, overseen by UD's Nobel Prize winning, Dr. John Byrne
- April 2009 The UD Climate Action Plan is released during Earth Week, committing UD to 20% reduction of carbon emissions by 2020



# PATH TO PROMINENCE

A STRATEGIC PLAN FOR THE UNIVERSITY OF DELAWARE

HOME

PRINCIPLES

MILESTONES

PROGRESS

RESOURCES



## The Initiative for the Planet

*Our overarching objective is to make the University of Delaware a national and international resource for environmental research, technology, education, and policy—today and into the future.*

In the opening decade of the 21st century, the constraints imposed by a common planet have come to the forefront. The University of Delaware, with a strong history of environmental research and education, is positioned to help lead the way in developing technological, social, political, and cultural solutions to these challenges. As a cornerstone of our commitment, we will undertake to become carbon-neutral.

# Annual Emissions Newark Campus

## Other Emissions

Waste, Landscaping, Food Services

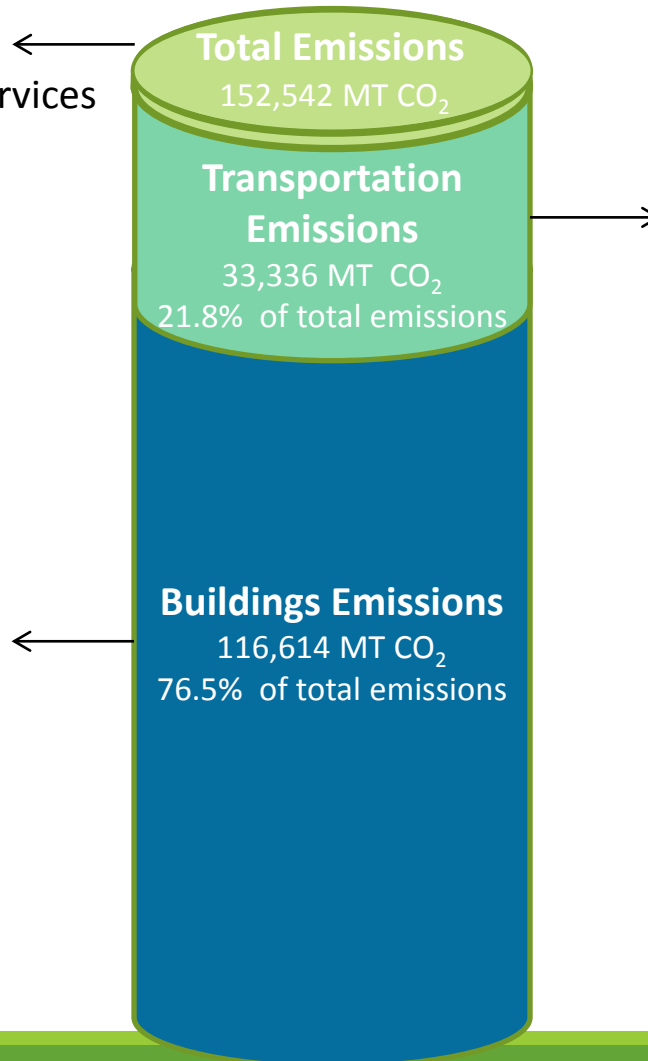
- ❖ 2,592 MT CO<sub>2</sub>
- ❖ ~ 1.7% of total emissions

## Building Emissions

70% from electricity

29% from natural gas

1% from heating oil



## Transportation Emissions

86% from daily commutes

8% from university fleet

6% from student trips home



# Action Plan Themes & Projects



## Green Infrastructure – 32 Projects with Total CO<sub>2</sub> Reduced = 17.4%

- Conservation - Operations
- Smart Metering and Improved Building
- Automation Systems
- Conservation - Maintenance
- Efficiency Upgrades at Utility Plants

## Sustainable Transport - 14 projects with Total CO<sub>2</sub> Reduced = 1.1%

- Transportation Demand Management Programs (Carpools, Vanpools, Transit, Bicycle Incentives)
- Improved UD Fleet Efficiency

## Green Power – 6 projects with Total CO<sub>2</sub> Reduced = 16.4%

- New CHP Plant
- Solar Power
- Geothermal Heat Pumps
- Offshore Wind Purchase
- New Fuel Cell Plant

## Green Community Action – 16 projects with Total CO<sub>2</sub> Reduced 0.4%

- Green Liaison Program (Energy Conservation, Single Stream Recycling, Phantom Loads, etc.)
- Dorm Energy Competitions
- Education & Awareness Initiative



# Sustainability Task Force Mission Statement

---


The Sustainability Task Force serves as a catalyst for sustainable activities at UD. The mission of the Task Force is to stimulate networking; to raise awareness and educate the University community about sustainability issues; to promote existing sustainable practices at the University; and to encourage and support multidisciplinary efforts in education, research, service, and operations that contribute toward building a more sustainable UD consistent with UD's mission statement and strategic planning initiatives.



www.udel.edu/sustainability/taskforce/ Google

Weather ▾ Cooking sites ▾ Recipes ▾ M & T Home Access Center 36th Ave NE Yfrog photos


Welcome to Baltimore × Sustainability Taskforce, University of Dela... Untitled

 UNIVERSITY of DELAWARE Powered by Google A-Z Index

# Sustainability *taskforce*

**Task Force Home** UD Sustainability Fund Funded Projects Green Guide

*Your portal to sustainability-related activities overseen by UD's Sustainability Task Force*



## The Challenge

Formed in the Fall of 2007 with support from UD's Academic and Student Affairs Council, the Task Force is a group of UD faculty, staff, and students charged with making the University more sustainable. More than 60 members serve on the Executive Council and associated working groups.

### THE ANSWER

Anyone at UD is welcome to volunteer - if you are interested, please email us at [ud-sustainability@udel.edu](mailto:ud-sustainability@udel.edu).

### Get Involved

The Task Force oversees many sustainability-related events and opportunities at UD.

- [Green Liaisons Program](#)
- [Campus Sustainability Day](#)
- [Earth Week](#)
- [UD Sustainability Fund](#)

### Contact Us

**We want to hear from you**

if you have any questions regarding the Sustainability Task Force, please contact Dr. Kathleen Kerr or Dr. John Madsen at [ud-sustainability@udel.edu](mailto:ud-sustainability@udel.edu).

### Support the Sustainability Fund

The UD Sustainability Fund provides grant money for



# Community Action

---



- ❖ Green Liaisons Program
- ❖ Single Stream Recycling
- ❖ Campus Sustainability Day
- ❖ Earth Week
- ❖ UD Sustainability Fund
- ❖ Marketing and Communications
- ❖ Policy





# welcome to earth week 2013



### Events planned for Earth Week 2013:

Climate Change in 3D | Alternative Journey to Work Day | Mini Film Festival  
Quizzo | The Genius of Earth Day | Green Expo | Green Art Fair  
Dare to Unplug | Repurpose Clothing Workshop | Spring Community Cleanup  
H.E.N.stock Spring Yard Sale | Sustainable Food  
Earth Day Anniversary Panel | Ag Day

## Climate Change in 3D

**Monday, April 15**

4pm - 5:30pm

**Gore Hall**

A panel discussion, **Climate Change in 3D: a discussion of climate change in three dimensions, science, policy and culture.**

Jennifer de Mooy, organizer, is the Climate Adaptation Project Manager for Delaware's Division of Energy and Climate. Jennifer is a graduate of the University of Delaware's Center for Energy and Environmental Policy.



Community Garden at the English Language Institute

CLOSE X





Signage on hillside - Meadows

CLOSE



# UDaily

MEDIA CONTACT | SUBSCRIBE | S

GLOBAL | RESEARCH | PEOPLE | HONORS | EVENTS | SPO



ADVERTISEMENT



The new water bottle refill station in the Perkins Student Center promotes sustainable water practices.

*Vita Nova*

Now  
TAKING  
RESERVATIONS  
FOR THE  
SPRING  
SEMESTER

302-831-0500

### News Media Contact

University of Delaware  
Office of Communications & Marketing  
302-831-NEWS  
ud-ocm@udel.edu

## Water bottle refill station

UD's first water bottle refill station opens in Perkins Student Center

**NEW ON** UDaily

# Peer to Peer Interaction

---

**Questions ?**

**Successes?**

**Stories?**

**Challenges?**

---

# Resources

---

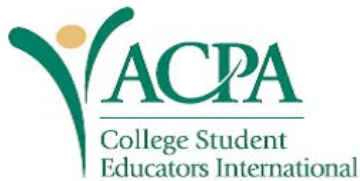




<http://heasc.aashe.org>



<http://www.aashe.org>



<http://www.acpa.nche.edu/sustaincomm>



<http://tinyurl.com/nirsasustainability>



<http://www.naspa.org/constituent-groups/kcs/sustainability>

# Listservs and Groups

---

## Green School List

- ❖ <http://listserv.brown.edu/?A0=GRNSCH-L>
- ❖ Google: Green School Listserv

## LinkedIn Groups

- ❖ [Sustainability in Student Affairs](#)



# Campus Sustainability Day

---

**October 22, 2014**

**<http://campussustainabilityday.org/>**



**AASHE 2014**

**October 26 – 29, 2014**

**Portland, Oregon**

**[www.aashe.org](http://www.aashe.org)**

# Contact Information

<b>Debra Rowe</b>	<code>educatingforasustainablefuture@gmail.com</code>
<b>Kaye Holman</b>	<code>kaye.holman@colostate.edu</code>
<b>Tim Broderick</b>	<code>tim.broderick@colostate.edu</code>
<b>Janice DeMonisi</b>	<code>jdemonisi@scu.edu</code>
<b>Maureen McGonagle</b>	<code>mmcgonag@depaul.edu</code>
<b>James Tweedy</b>	<code>tweedy@udel.edu</code>

# Thank You!



[HTTP://HEASC.AASHE.ORG](http://HEASC.AASHE.ORG)

---



[HTTP://WWW.AASHE.ORG](http://WWW.AASHE.ORG)